

Satria
Neo



**3 YEAR
FACTORY BACKED
WARRANTY**

**7 YEAR
ANTI-CORROSION
WARRANTY**

**FREE 24 HR
ROADSIDE
ASSISTANCE**

**CAMPRO
DOHC
IAFM**

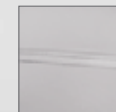
**LOTUS
RIDE
&
HANDLING**

STANDARD FEATURES

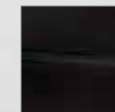
	G	GX	GXR
Power Steering	✓	✓	✓
Air Conditioning	✓	✓	✓
SRS Driver & Passenger Airbags	✓	✓	✓
Driver & Passenger Pre-tensioner Seatbelts	✓	✓	✓
Cup Holders	✓	✓	✓
Remote Keyless Entry	✓	✓	✓
Central Locking	✓	✓	✓
Alarm / Immobiliser	✓	✓	✓
CD/MP3 Audio System	✓	✓	✓
Steering Wheel Audio Controls	✓	✓	✓
Remote Fuel Filler Release	✓	✓	✓
Power Windows	✓	✓	✓
Height Adjustable Steering Column	✓	✓	✓
Height Adjustable Drivers Seat	✓	✓	✓
Multi Function Trip Computer	✓	✓	✓
Front Door Pockets	✓	✓	✓
Exterior Door Handle Colours	Black	Body Colour	

	G	GX	GXR
12V Interior Accessory Socket	✓	✓	✓
Reverse Sensors	✓	✓	✓
Vanity Mirror on Sunvisor (driver)	✓	✓	✓
Vanity Mirror on Sunvisor (passenger)	✓	✓	✓
Exterior Mirror Operation		Electric	
Collapsible Steering Column	✓	✓	✓
Front Head Rests Height Adjustable	✓	✓	✓
Split Fold Rear Seats		60/40	
Rear Wiper	✓	✓	✓
Alloy Wheels	-	✓	✓
Side Protector Moulds	-	✓	✓
ABS (Anti Lock Brake System) with EBD	-	✓	✓
Rear Spoiler	-	-	✓
Auto Climate Control	-	-	✓
Front Fog Lights	-	-	✓
Cruise Control (Auto Only)	-	-	✓
Engine Cover	-	-	✓

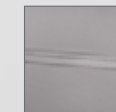
COLOUR RANGE



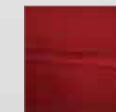
Solid White



Tranquility Black



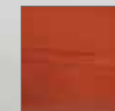
Genetic Silver



Brilliant Red



Metal Grey



Energy Orange



www.proton.com.au

All information detailed in this brochure is correct at the time of going to print. Proton Cars Australia reserve the right to make changes to the colours, features and/or the specifications detailed in this brochure as well as discontinue individual models without prior notice. Images are for display purposes only and may not represent vehicle specifications. Please contact your local Proton dealer to ensure that the vehicle delivered is in accordance with your expectations. Colour availability varies by state and model.

MEET THE PROTON SATRIA NEO

The Satria Neo three-door hatch brings fresh styling, a contemporary design and trademark Lotus-inspired handling to Aussie buyers looking for a sporty small car.



Fitted with a 4 speaker AM/FM CD/MP3 audio system including steering wheel controls.



A host of standard safety features including dual front SRS airbags and reverse sensors.



Lotus engineered ride and handling that is responsive and inspires confidence.



GXR comes standard with Auto climate control A/C, Alloys, Front fog lights and ABS with EBD.



The contemporary exterior design is complemented by a sporty and fun interior cabin.



More power, more acceleration, more of everything with 82 kW of power.

GENUINE ACCESSORIES

Alloy Wheels

Locking Wheel Nuts

Slimline Weathershields

Headlight Protectors

Bonnet Protector

Body Kit

Rear Spoiler

Bluetooth Handsfree Kit

iPod interface kit

Proton Safety Kit

Remote Boot Release Kit

Sun Shades

Roof Racks



TECHNICAL SPECIFICATIONS

	G	G	GX	GX	GXR	GXR
TRANSMISSION						
	Manual	Automatic	Manual	Automatic	Manual	Automatic
Transmission Type	5 Speed	4 Speed	5 Speed	4 Speed	5 Speed	4 Speed
Transmission Model	F5M41	F4A41	F5M41	F4A41	F5M41	F4A41
POWERTRAIN						
Engine	CAMPRO Four Cylinder, 16V DOHC, Multi Point Injection					
Bore x Stroke (mm)	76.0 x 88.0					
Total Displacement (cc)	1597					
Compression Ratio	10:1					
Maximum Power	82kW / 6,000 rpm					
Maximum Torque	148Nm / 4,000 rpm					
Fuel System	Multi Point Injection					
PERFORMANCE						
Maximum Speed (s)	190	185	190	185	190	185
0-100 (sec)	11.5	13.7	11.5	13.7	11.5	13.7
Fuel Efficiency as per ADR 81/02 - Combined	6.6	7.4	6.6	7.4	6.6	7.4
CO2 (g per km) - Combined	157	177	157	177	157	177
CHASSIS						
Steering System	Rack and Pinion Hydraulic Power Steering					
Front Suspension	McPherson Strut with Stabiliser Bar					
Rear Suspension	Multi Link with Stabiliser Bar					
Minimum Turning Radius (mtrs)	4.9					
Front Brake	Ventilated Discs					
Rear Brake	Discs					
Tyre Size	195 / 55 R15				195 / 50 R16	
Wheel Size	15" Steel				16" Alloy	
Spare Tyre	Space Saver					
Ground Clearance (mm)	150					
DIMENSIONS & WEIGHT						
Overall L x W x H (mm)	3905 x 1710 x 1420					
Wheel base (mm)	2440					
Track, Front / Rear (mm)	1470 / 1470					
Overhang Front / Rear (mm)	825 / 640					
Weight (kg)	1150	1175	1160	1185	1165	1190
Fuel Tank Capacity (Ltrs)	50					
WARRANTY						
Warranty	3 year / 100,000km			3 year / Unlimited km		
Roadside Assistance	12 Months			3 years		